



# **COMPREHENSIVE SAFETY & SECURITY STRATEGIES**

**FOR CREATING A SMART CAMPUS**

KEVIN LINDEN

DIRECTOR OF INNOVATION & TECHNOLOGY



# LEARNING OBJECTIVE

## FOUR LEARNING OBJECTIVES

- At the end of the session, participants should be able to identify existing technology and how to leverage it to create a smart campus.
- A variety of other technologies available will be shared along with strategies on how to incorporate them if they so choose.
- There will be a better understanding of training for teachers and staff for safety and security prevention and implementation.
- Lastly, participants will better understand what collaboration with school security, law enforcement, and first responders should look like.

# DESCRIPTION



A smart campus leverages technology to create a safe environment for our children, teachers, and staff all while maximizing your investment. A smart campus integrates existing technology with an option to enhance; hands-on preparation and prevention training for staff; plus, collaboration and communication between school security, law enforcement, and first responders. This presentation will outline safety and security strategies to assist you in creating a smart campus at your school.

# KEVIN LINDEN



As the Director of Technology Innovation at SWC, Kevin is responsible for evaluating new technology solutions, continuously validating technologies carried in the SWC product portfolio, and working with the company's client partners in maximizing technology investments. With extensive experience in infrastructure architecture, data security, application performance, and systems integration, Kevin brings well-rounded expertise in the design of critical communication solutions for SWC clients.

# HOW TO LEVERAGE YOUR CURRENT TECHNOLOGY

CREATING A SMART, SAFE, & SECURE CAMPUS

# EXISTING TECH

*(YOU MAY ALREADY HAVE THESE)*

- CCTV Cameras
  - Live Camera Stream
  - Recorded video
- Access Control
  - Key fobs / key cards
  - Pin Codes
- Fire Alarm
- Metal Detectors
- Wireless Staff Duress
  - Badges
  - Keyword Detection
  - Location Maps
- Visitor Management
  - Background Check
- Intercom / Overhead Paging
  - Canned Sequences
  - Message Boards
- Environmental Sensors
  - Vape Detection
  - Other air quality alerts
- Network Security
  - Firewalls
  - Email Filtering
  - Security Credentials
  - Antivirus Software





# SURVEILLANCE CAMERAS

## BENEFITS:

- Deterring and identifying threats
- Prevention of vandalism and theft
- Improved response to incidents including conflict resolution
- Training and improvement resource

## NEW CAPABILITIES

- True proactive and continuous monitoring using artificial intelligence software
- Automated detection of critical situations
- Also provides capabilities for use in non-critical situations

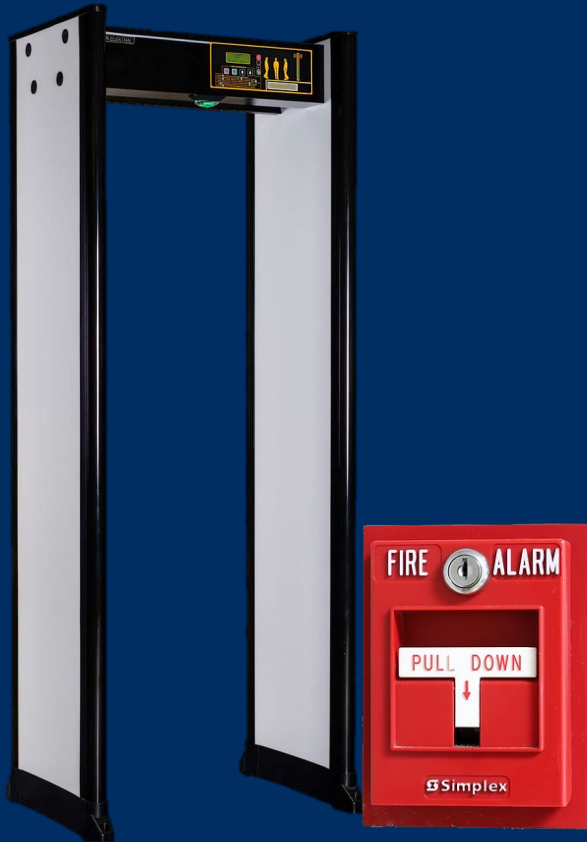
# ACCESS CONTROL



## BENEFITS

- Restricted entry into schools
- Restricted entry into sensitive interior locations
- Emergency lockdown capabilities
- Monitoring and auditing
- “On the fly” system changes and no need for physical keys





# FIRE ALARM & METAL DETECTOR

## BENEFITS:

### FIRE ALARM

- No explanation needed 😊

### METAL DETECTORS

- Obvious safety measures
- Increased student, staff, and parental “peace of mind”



# WIRELESS STAFF DURESS

## BENEFITS:

### BEACONS (BADGES OR OTHER WEARABLE DEVICES)

- Request help anytime and anywhere with ease
- Send notifications and alarms instantly
- Provide location of individual requesting help

# VISITOR MANAGEMENT

Name \_\_\_\_\_

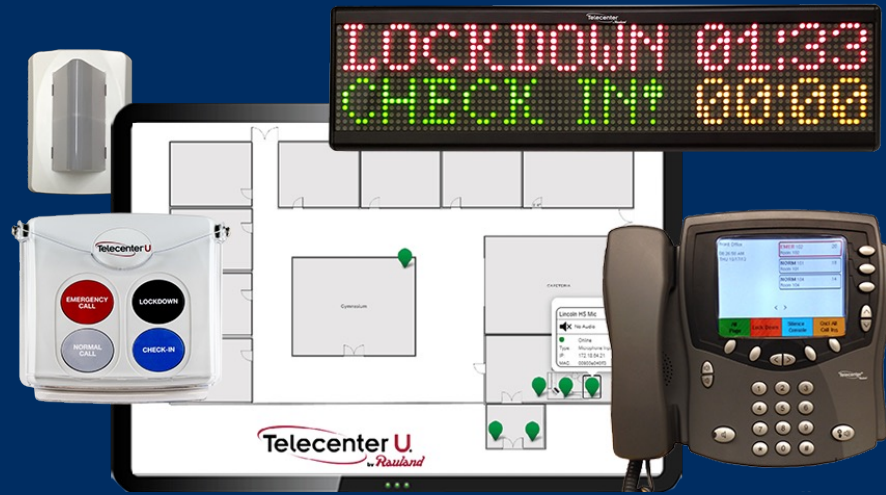
Right Hand				
				
Thumb	Index Finger	Middle Finger	Ring Finger	Pinky Finger

Left Hand				
				

## BENEFITS:

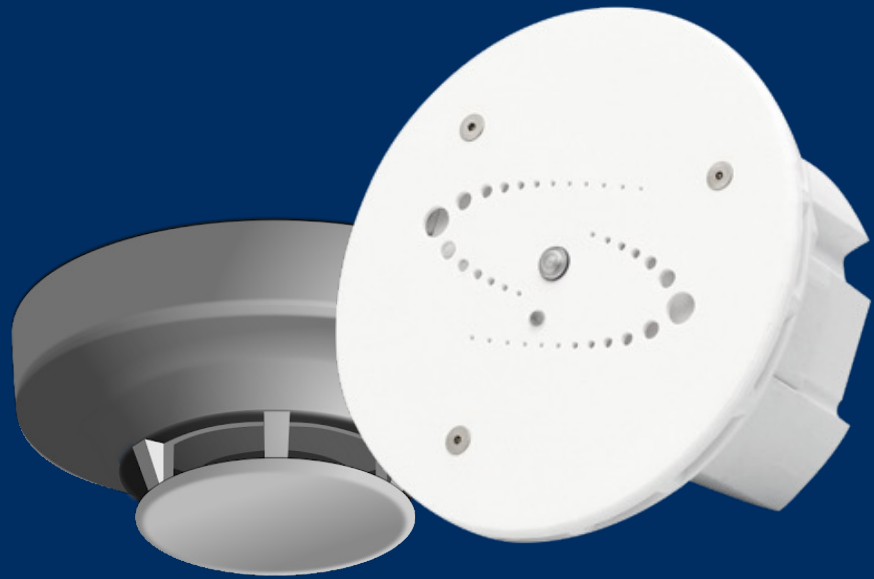
- Assurance of authorized entry
- Efficient check-in process
- Monitoring and digital audit records
- Enhanced emergency response



# INTERCOM & PAGING

## BENEFITS:

- Efficient communications and public announcements
- Emergency notifications
- Time management
- Accessibility Support



# ENVIRONMENTAL SENSORS

## BENEFITS:

- Indoor air quality monitoring
- Early detection of hazardous events
- Occupancy Sensing

# NETWORK SECURITY

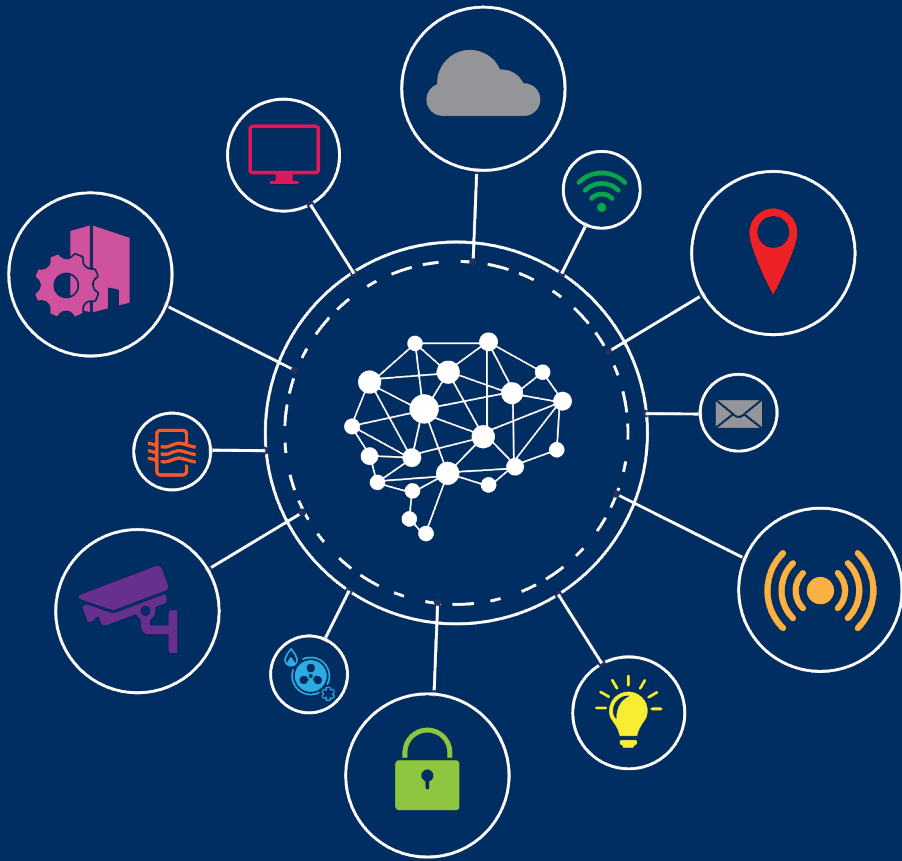


## PREVENTATIVE MEASURES:

- FIREWALLS
- MANAGED SWITCHES
- EMAIL FILTERING
- SECURITY CREDENTIALS
- ANTIVIRUS SOFTWARE

# PHYSICAL SECURITY INFORMATION MANAGEMENT (PSIM)





# PSIM

(PHYSICAL SECURITY INFORMATION MANAGEMENT)

## OVERVIEW:

A software platform that *integrates* and *manages* various security systems and devices within an organization or facility.

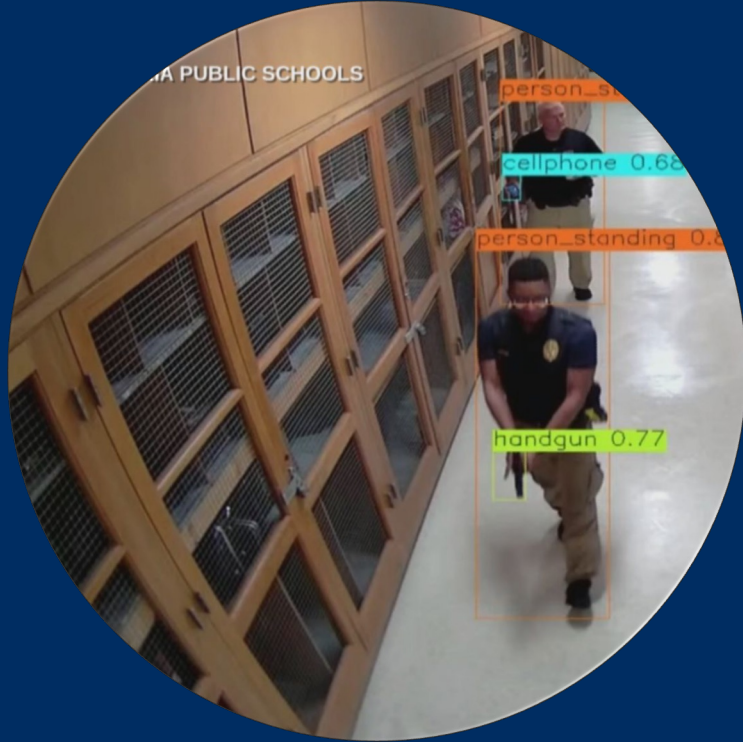
- Provide a centralized platform for monitoring, analyzing, and controlling multiple security technologies
- Utilize existing systems while building a foundation for future security applications
- Maximize existing security based solution investments
- Drive efficiency within daily operations
- Enable automation between systems for enhanced responsiveness
- Instantly engage critical resources
- Converge Operational Technology (OT) with Information Technology (IT)
- Enhance incident response processes and training
- Enable designated resources to more easily engage without significant training



# NEWER TECH

- AI Camera Software Intelligence
- PSIM (Physical Security Info Management)
- AI Cyber Security Monitoring
- Passive Body Scanners
- IoT Sensors





# AI CAMERA SOFTWARE

## BENEFITS:

- Risk mitigation
- AI Engine continuously monitoring camera feeds
- Ability to learn and “grow” for additional use cases
- Overlay capabilities to leverage existing camera system investment



# PASSIVE BODY SCANNERS

## BENEFITS:

- Greater accuracy
- More than just metal
- Increased throughput
- Digital evidence automatically captured
- Integration capabilities

# IoT SENSORS



## EXAMPLE USE CASES:

- Monitoring of exterior doors where traditional access control isn't available
- Environmental monitoring for temperature, humidity, etc.
- Typically low cost



# AI CYBER SECURITY MONITORING

## WHY MORE IS NEEDED:

- Volume of malicious cyber events will not only continue to increase but will do so at a significantly greater pace
- Protection of the operational technology used for safety and security

# TRAINING IS CRITICAL

- Hands-on training for teachers, administrators, and security / law enforcement
  - Active shooter/intruder response
  - Emergency Preparedness
  - Threat assessment
  - Cybersecurity awareness
  - Mental health & crisis intervention

Utilize your security solutions provider





# THANK YOU

**KEVIN LINDEN**

DIRECTOR OF INNOVATION & TECHNOLOGY

KEVIN.LINDEN@SWC.NET | 913.281.5100

